



# C.C.E

مؤسسة البناء المستمر للمقاولات العامة

General Contracting Est. for Continuous Construction

## Continues Construction General. Contractor. est.

**CONTINUOUS CONSTRUCTION GENERAL CONTRACTING EST**  
Thuqba Majmah Street, Cross No:02  
AL- Khobar Kingdom of Saudi Arabia

Tel .No. +966 03 8977660  
Fax. No. +966 03 8979990  
Email [info.cceksa.net](mailto:info.cceksa.net)  
[www.cceksa.net](http://www.cceksa.net)

# Table of Contents

- ❖ Overview
- ❖ Company Information
- ❖ Policy Statement
- ❖ Commercial & Infrastructure
- ❖ Quality Assurance
- ❖ Safety & Loss
- ❖ Prevention
- ❖ Planning and Scheduling
- ❖ Manpower Lists
- ❖ List of Equipment and Tools
- ❖ Completed Projects

# Company Overview

- ❖ **CONTINUOUS CONSTRUCTION GENERAL CONT. Est.** was registered and 100% Saudi company on 2001 with the Ministry of Chamber of Commerce under the Commercial Registration No. 2060037767.
- ❖ Our company was formed with a commitment to provide "Excellent" available services in the specialized field of Civil works such as Housing/Building Construction, Asphalt Roads and Parking area, Site Development, Mechanical, and Electrical & Instrumentation works.
- ❖ Our company offers services which compliments growing range of integrated services that enable us to take any industrial or public works project from concept through planning, design, construction, operations and maintenance. Every element of the firm is structured to ensure that we can leverage our global resources and know-how to satisfy each client's particular needs.

- ❖ The services provided by **CONTINUOUS CONSTRUCTION GENERAL CONT. Est.** are enhanced through working relationships and association with established International and local contractors, and specialized vendors. Using these strategic alliances, our company can provide a combined team of well qualified personnel to implement the successful execution of any projects.
- ❖ Our company has qualified and experienced Engineers, Technicians and Skilled personnel for all new constructions, modification, installation and commissioning activities related to its civil, mechanical, electrical and instrumentation projects, to meet any client's requirements.
- ❖ Finally, **CONTINUOUS CONSTRUCTION GENERAL CONT. Est.** places the importance of safety and consequently adheres to a detailed Loss Prevention program. All employees undergo a detailed Safe Working Practices Program and are instructed to strictly follow the program.

# Company Information

<b>Company Name</b>	CONTINUOUS CONSTRUCTION EST. GENERAL CONTRACTING
<b>Address</b>	Thuqba Majmah Street, Cross No:02 ALKhobar Kingdom Saudi Arabia <a href="http://www.cceksa.net">www.cceksa.net</a> – <a href="mailto:info@cceksa.net">info@cceksa.net</a>
<b>Nature of Business</b>	Building Construction, Site Development, Asphalt Road and Parking area, Structural fabrication and Erection, Electrical works, HVAC installation, Manpower Supply and Equipment Rental
<b>Commercial Registration No.</b>	2060037767
<b>Telephone Number</b>	+966 03 8977660
<b>Fax Number</b>	+966 03 8979990



# Policy Statement

❖ **CONTINUOUS CONSTRUCTION GENERALS. CONT. EST** is committed to provide, to the client's satisfaction, professional "Excellent" services available.

❖ **CONTINUOUS CONSTRUCTION GENERALS. CONT. EST** also strives to attain and set standards of performance, in our fields of specialization, which would be looked upon by others as a benchmark.

❖ **CONTINUOUS CONSTRUCTION GENERALS. CONT. EST** has always accepted the fact that the customer is at the top. Everything we do is geared to meet "total and complete" customer acceptance. With this in mind, we are continuously in a state to develop, improve and share our knowledge and resources to meet the ever-changing needs and demands in this fluctuating construction scenario.

❖ **CONTINUOUS CONSTRUCTION GENERALS. CONT. EST** believes in maintaining a workforce of qualified employees who match the stringent work culture required to meet standards higher than those set by the industry.

❖ To this end,

❖ **CONTINUOUS CONSTRUCTION GENERALS. CONT. EST** has qualified and experienced managers, engineers, scheduler, inspectors, foremen, leadsmen, skilled workers and other necessary backup crews.

# Commercial & Infrastructure

**CONTINUOUS CONSTRUCTION GENERALS. CONT. EST** in close co-operation with its clients and vendors can provide total turnkey services from concept to completion along with project a construction management, with or without design.

Services offered are concept development, preliminary design, site selection, advance order of materials, program preparation, detailed design, procurement, price negotiation, site setup and mobilization, quality control, co-ordination programming and cost control, as built drawings and O&M manuals, fit-out and furnishing, hand over to client.

## Civil & Buildings

**CONTINUOUS CONSTRUCTION GENERALS. CONT. EST** has gained in a short time synonymy with quality and client satisfaction, having been involved with many significant construction and upgrade projects throughout the Kingdom.

A combination of flexibility, quality, special skills and adherence to budgets have ensured a pre-eminent position when clients require a single source contractor with capabilities in project development, management, construction services, installation and commissioning.

### **Capabilities:**

**CONTINUOUS CONSTRUCTION GENERAL CONT. Est.** is Fully capable to perform following:



# Civil Construction

- ❖ Earth moving, Site Development, Roads construction & Parking areas.
- ❖ Residential, Industrial and Commercial Building Constructions.

# Industrial Construction

- ❖ Complete Procurement, Construction and Installation of Pre-Engineered Building.
- ❖ Machine Foundations Design, Procurement and Construction along with Erection.
- ❖ Fabrication, Installation and Erection of Steel Structure, GSM Towers.

## Electrical & Communication - Installation, Testing, Commissioning and Maintenance

- ❖ Underground and overhead distribution network.
- ❖ Electrification of Buildings and Plant facilities.
- ❖ Telecommunication works and security alarm system.
- ❖ Power system, Substation, Switchgears and MCC.
- ❖ Plant equipment, facilities and controls.
- ❖ Calibration of System protection and monitoring devices.

# Mechanical Works

- ❖ HVAC Design and installations.
- ❖ Steel Fabrication and Installation.
- ❖ Above ground and Underground Utilities Installation.

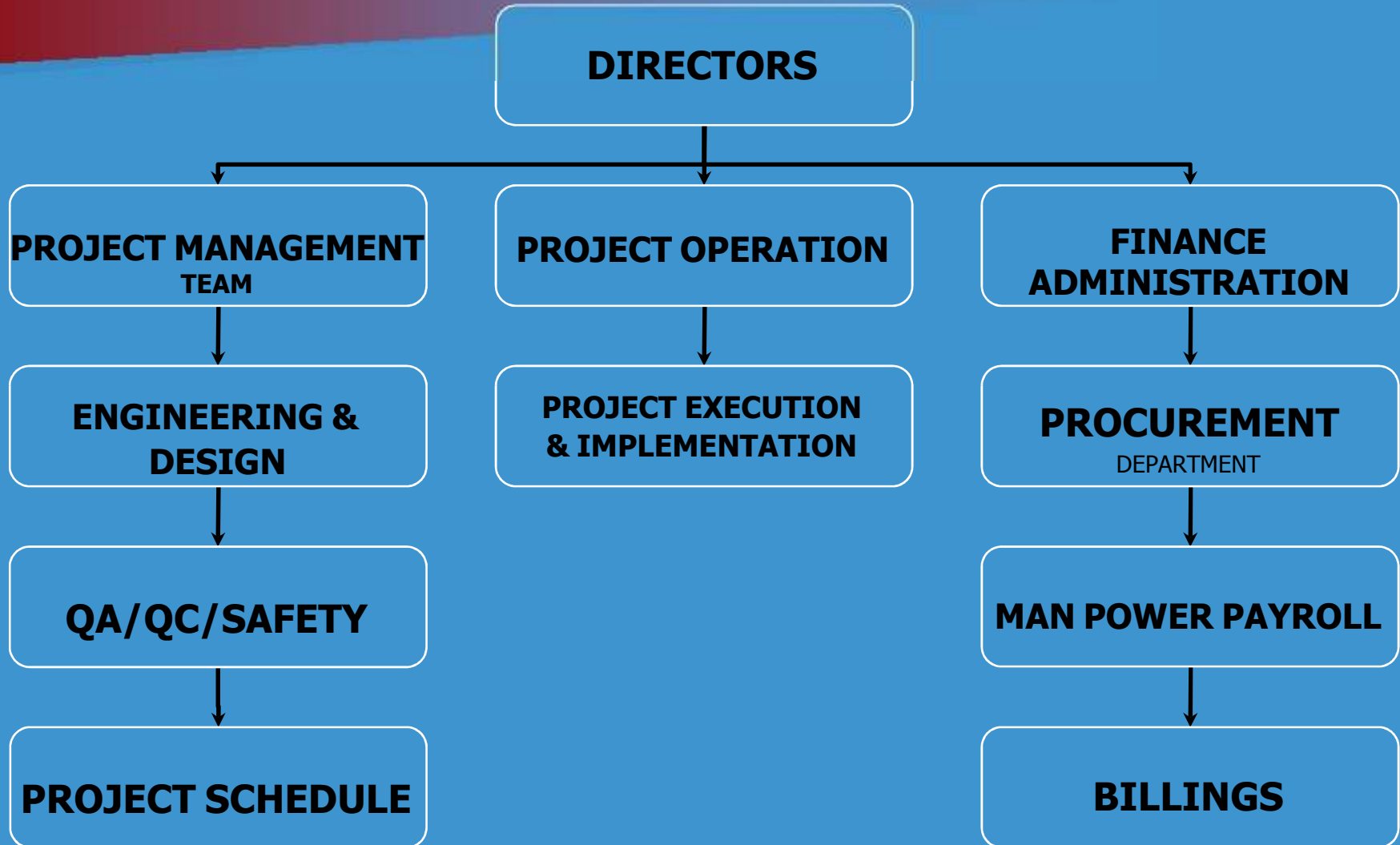
# Instrumentation Works

- ❖ Installation, process equipment / facilities, piping controls, testing and
- ❖ Commissioning Instrumentation devices.
- ❖ Calibration of Flow control system and supervisory instruments, Tanks / pipe
- ❖ probes, storage tanks, and gauging devices.
- ❖ Plant automation for process operation enhancement.
- ❖ In-house testing commissioning of Plant / refinery instruments.

# Procurement , Supply & Maintenance

- ❖ Electromechanical Equipments and Accessories.
- ❖ Spare parts for Electrical / Mechanical Units.
- ❖ Various Consumable material for mechanical works.
- ❖ Asphalt mix, Asphalt Primer, Aggregate base course

# ORGANIZATIONAL CHART



# QUALITY ASSURANCE

- ❖ **CONTINUOUS CONSTRUCTION GENERAL CONT. Est.** established and implements an effective and documented project quality system to ensure adequacy in quality level, meeting or exceeding Client requirements.
- ❖ **CONTINUOUS CONSTRUCTION GENERAL CONT. Est.** QA/QC engineer develops a quality assurance program, in accordance with the client requirements and **CONTINUOUS CONSTRUCTION GENERAL CONT. Est.** quality control system.
- ❖ The quality plan will be submitted to Client for approval and the Project Management Team will be responsible to perform the quality assurance, control and inspection services in accordance with the approved Quality system and program. The Quality Plan will be submitted to Client within 45 days from the effective date of contract.
- ❖ The QA Manual will comply with the following minimum criteria:
- ❖ The various activities affecting the quality will be carried out within a system where organizational structures, functional responsibilities, levels of authority, as well as interface positions and lines of communication are clearly defined;



- ❖ The above activities will be carried out in accordance with the procedures, to ensure an integrated approach to the quality level and provide proper quality control;
- ❖ The document control procedures and method of implementation;
- ❖ Procurement quality procedures;
- ❖ Auditing of the QA/QC program, performances monitoring in relation to established quality objectives and promote corrective actions.
- ❖ The basic functions of the QA/QC staff will be:
- ❖ Quality review of procurement, fabrication and construction works;
- ❖ Review and interpretation of the specifications and the contract;
- ❖ Quality review of inspection, tests, pre-commissioning and commissioning;
- ❖ Quality meeting with Client PMT and third party inspection agent for the review of work at site during construction, commissioning and acceptance.
- ❖ The documented Quality System will include quality management objectives, policies, organization and procedures complying with the requirements of Client PMT.

# SAFETY & LOSS PREVENTION

- ❖ **CONTINUOUS CONSTRUCTION GENERAL CONT. Est.** will adhere to the applicable safety laws, standards, codes and regulations including any safety program established by Client while working in the premises of Client . CONTINUOUS CONSTRUCTION ESTABLISHMENT 's specific safety plan will be submitted and approved before the start of any work.
- ❖ **CONTINUOUS CONSTRUCTION GENERAL CONT. Est.** will, at all times, conduct our operations at the work site in such a manner as to avoid any risk of bodily injuries/fatalities to persons or damage to property.  
**CONTINUOUS CONSTRUCTION GENERAL CONT. Est.** will provide safety orientation course to the site supervisors and workers.  
**CONTINUOUS CONSTRUCTION GENERAL CONT. Est.** Project Safety manager/officer will take all precautions to safe guard against such risks and will conduct regular safety inspections at the construction facilities, materials, tools and equipment storage in on-site and off-site locations.
- ❖ **CONTINUOUS CONSTRUCTION GENERAL CONT. Est.** will maintain accurate accident and injury reports and will inform Client PMT in a timely manner and, where required, will furnish Client PMT with summary of man-hours lost due to injuries.

# PLANNING AND SCHEDULING

- ❖ **CONTINUOUS CONSTRUCTION GENERAL CONT. Est.** uses the latest PRIMAVERA project management software P6 for planning and scheduling in all their projects.
- ❖ After getting the Notice to Proceed (NTP) from the client, our Planner/Scheduler will prepare the CPM method of schedule. The CPM schedule will show all activities and sequence of operations needed for the orderly performance and completion of every separable part of the Work. The Overall schedule includes mobilization, project management, procurement, construction, testing, pre-commissioning, commissioning, start up and demobilization. After having incorporated all the logical relationship between various activities in the schedule, practical and realistic critical path activities will be identified. Close monitoring will be done on all critical activities to avoid any potential delay in the project duration.

- ❖ The Schedule will be prepared considering each work area based on the milestone schedule dates and a standard activity breakdown. All important dates will be reflected in the overall schedule.
- ❖ The overall schedule includes the following:
  - ❖ Milestone schedule;
  - ❖ Project target schedule;
  - ❖ Project current schedule;
  - ❖ Project look ahead schedule;
  - ❖ Manpower loading;
  - ❖ Progress Reports.

# PROJECT REPORTING

- ❖ Two sets of monthly progress reports will be submitted every month, one week prior to end of each month, detailing the progress of the activities executed in the month by each discipline and those planned for the succeeding month.
- ❖ The progress measurement graphical submissions and reports will contain mainly the following:
- ❖ Bar chart with critical path for each separable part of work planned and actually executed in the month;
- ❖ Progress report on the activities for the planned and actual percentage completion, completed weighted percentage, remaining percent to be completed;
- ❖ Detailed 'S' curve showing actual percentage completion with the planned scheduled progress;
- ❖ Detailed one-month look-ahead schedule with planned percentage;

- ❖ Monthly resource utilization report;
- ❖ Schedule of procurement and material delivery to site;
- ❖ A weekly and monthly abstract report will contain to date actual progress, to date scheduled progress, to date cumulative actual progress, to date cumulative used man-hours, to date cumulative scheduled man-hours, etc;
- ❖ Analysis of work schedule including, action taken or planned to maintain or revise the program of work and the comments on any significant future events.

# Manpower Lists

- ❖ Project Manager
- ❖ Engineers
- ❖ QA Manager
- ❖ QC Manager
- ❖ Planner/Scheduler
- ❖ QC Inspectors
- ❖ Supervisors
- ❖ Surveyor
- ❖ Foreman
- ❖ Electricians
- ❖ Structural Welders
- ❖ Erectors / Fabricator
- ❖ Carpenters
- ❖ Mason
- ❖ Steel Fixers
- ❖ Plumbers
- ❖ Painters
- ❖ Light Drivers
- ❖ Heavy Drivers
- ❖ Heavy Equipment Operators
- ❖ Labour

# List of Equipment and Tools

- ❖ BUS (50Seater)
- ❖ SUV 4x4
- ❖ Pick – up 4x4
- ❖ High Bed Trailer
- ❖ High Bed Trailer
- ❖ Water Truck
- ❖ Dump Truck
- ❖ Combination Backhoe (JCB)
- ❖ Backhoe (225)
- ❖ Grader 4G
- ❖ Loader 966 & 986
- ❖ Steel Roller Compactor (10Tons)
- ❖ Asphalt Paving Machine
- ❖ Rubber Roller Compactor
- ❖ Mini Loader ( Bobcat )
- ❖ Plate Compactor
- ❖ Concrete Vibrator
- ❖ Welding Machine
- ❖ Surveying Instrument
- ❖ Leveling Instrument
- ❖ Air Compressor 600 CFM
- ❖ Asphalt/Concrete Cutter
- ❖ Jack hammer
- ❖ Sandblasting Machine



# Completed Projects

No.	Period	Project	Value(SR)	Client
01.	June15,2007–August18, 2008	Excavation,Backfillingand Leveling	650,000.00	DahranMall
02.	January2008–September 2008	ConstructionofWarehouse	980,000.00	NORDIC Systems
03.	November2008–February 2009	ConstructionofWarehouse FoundationandFloorSlab	365,000.00	NoorCarton Factory
04.	November28,2008–January 05,2009	AsphaltingWorksforService Road	150,000.00	Al-Hussaini UnitedCo
05.	March10,2009–May17,2009	FoundationandConcreteSlabfor Warehouse	180,000.00	Al-AwahiGen. Cont
06.	May22,2009–July5,2009	Excavation,Backfillingand Leveling	240,000.00	SeyadaLLC
07.	August20,2009–September 30,2009	PrinceMoh'dUniversityGates Modification	162,000.00	Aziziyah
08.	May10,2009	Tileworking	167,500.00	al_-awani Gen.Contracting

09.	JUNE18,2009- Sept10,2009	AsphaltingworksforParkingArea	265,000.00	NORDICSystems
10.	February01,2010	Villa	458,850.00	Al-Otaishan Cont.Est
11	JUNE2010	asphaltworkdammamairport highway	450,000.00	Sinopec
12	JUNE23,2010	AsphaltingworksforKingFahadRd, OmarBinKhattabStreet	440,000.00	SinopecIntlCo.
13	JUNE01,2010	Asphaltingworkjelawiya	241,602.00	CapitalLightCo.
14	April,2011-	GasPhaseVIII MaterialSupply	250.228.00	GreenDopPower ProjectCO.Ltd

# Road Construction























